



# TEF-1 Polyclonal Antibody

<b>Catalog No</b>	YP-Ab-02095
<b>Isotype</b>	IgG
<b>Reactivity</b>	Human;Mouse;Rat
<b>Applications</b>	WB;IHC;IF;ELISA
<b>Gene Name</b>	TEAD1
<b>Protein Name</b>	Transcriptional enhancer factor TEF-1
<b>Immunogen</b>	Synthesized peptide derived from TEF-1 . at AA range: 30-110
<b>Specificity</b>	TEF-1 Polyclonal Antibody detects endogenous levels of TEF-1 protein.
<b>Formulation</b>	Liquid in PBS containing 50% glycerol, 0.5% BSA and 0.02% sodium azide.
<b>Source</b>	Polyclonal, Rabbit,IgG
<b>Purification</b>	The antibody was affinity-purified from rabbit antiserum by affinity-chromatography using epitope-specific immunogen.
<b>Dilution</b>	WB: 1/500 - 1/2000. IHC: 1/100 - 1/300. ELISA: 1/40000.. IF 1:50-200
<b>Concentration</b>	1 mg/ml
<b>Purity</b>	≥90%
<b>Storage Stability</b>	-20°C/1 year
<b>Synonyms</b>	TEAD1; TCF13; TEF1; Transcriptional enhancer factor TEF-1; NTEF-1; Protein GT-IIC; TEA domain family member 1; TEAD-1; Transcription factor 13; TCF-13
<b>Observed Band</b>	50kD
<b>Cell Pathway</b>	Nucleus.
<b>Tissue Specificity</b>	Preferentially expressed in skeletal muscle. Lower levels in pancreas, placenta, and heart.
<b>Function</b>	disease:Defects in TEAD1 are the cause of Sveinsson chorioretinal atrophy (SCRA) [MIM:108985]; also known as atrophía areata (AA) or helicoidal peripapillary chorioretinal degeneration (HPCD). SCRA is characterized by symmetrical lesions radiating from the optic disk involving the retina and the choroid.,function:Binds specifically and cooperatively to the SPH and GT-IIC "enhansons" (5'-GTGGAATGT-3') and activates transcription in vivo in a cell-specific manner. The activation function appears to be mediated by a limiting cell-specific transcriptional intermediary factor (TIF). Involved in cardiac development. Binds to the M-CAT motif.,similarity:Contains 1 TEA DNA-binding domain.,tissue specificity:Preferentially expressed in skeletal muscle. Lower levels in pancreas, placenta, and heart.,
<b>Background</b>	This gene encodes a ubiquitous transcriptional enhancer factor that is a member of the TEA/ATTS domain family. This protein directs the transactivation of a wide variety of genes and, in placental cells, also acts as a transcriptional repressor.



Mutations in this gene cause Sveinsson's chorioretinal atrophy. Additional transcript variants have been described but their full-length natures have not been experimentally verified. [provided by RefSeq, May 2010],

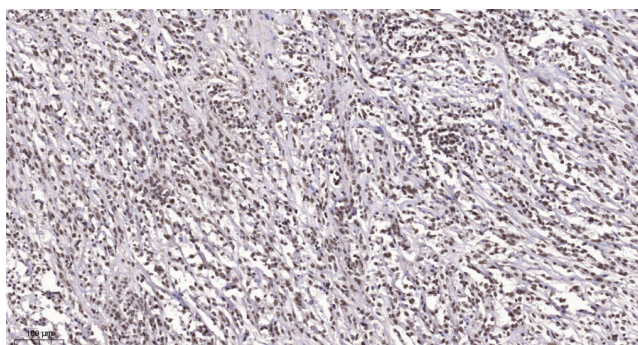
**matters needing attention**

Avoid repeated freezing and thawing!

**Usage suggestions**

This product can be used in immunological reaction related experiments. For more information, please consult technical personnel.

## Products Images



Immunohistochemical analysis of paraffin-embedded human Small intestinal stromal tumor. 1, Tris-EDTA,pH9.0 was used for antigen retrieval. 2 Antibody was diluted at 1:200(4° overnight.3,Secondary antibody was diluted at 1:200(room temperature, 45min).